



A COMPANY OF STPI GROUP

SE210, SME210 & SMEL210

Military Specified

Meets MIL-DTL-12883

General Characteristics

Weight

Dash Numbers 01-09:

Dash Numbers 11-20:

Grommet:

Mounting Hardware:

Socket Contact Material:

Socket Contact Type:

0.073 lbs (33g) Max.

0.055 lbs (25g) Max.

Silicone Rubber

Stainless Steel or Cadmium Plated

Gold Plated Copper Alloy

Closed Entry, Crimp Type,

Rear Entry and Release

Environmental Characteristics

Temperature Range:

Vibration (Sinusoidal):

Shock (any axis):

-70°C to +125°C

30g 10-3,000 Hz

200g, 6 ms

Electrical Characteristics

Contact Resistance:

Dielectric Strength

At Sea Level:

At 80,000 feet:

Insulation Resistance:

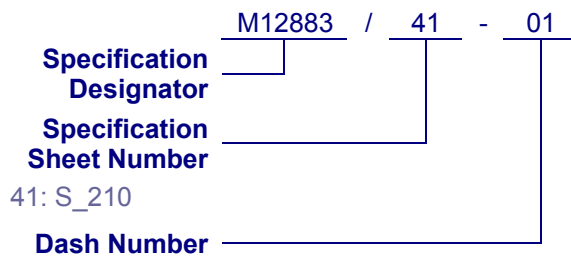
6 MΩ

1,500 Vrms Max.

500 Vrms

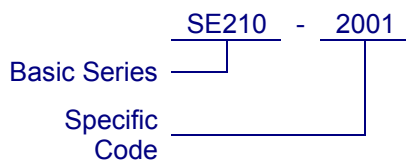
1,000 MΩ Min

Military Part Numbering



See Charts

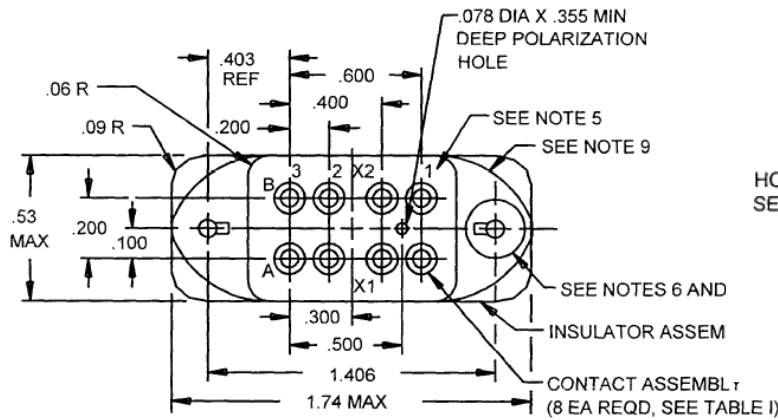
QPL Part Numbering



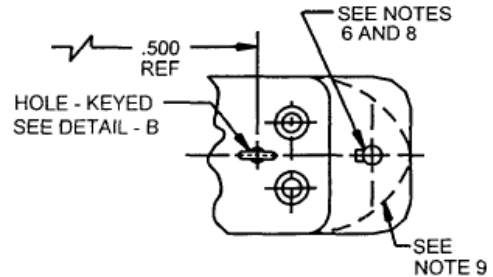
Dash Numbers – Specification Sheet Number 41

Dash Number	Basic Series	Specific Code	Body Type	Stud Type	Hardware Type	Number of Contacts	Contact Size (AWG)
01	SE210	2001	A	Loose	Cadmium Plated	8	16
01S	SE210	2001S	A	Loose	Stainless Steel	8	16
02	SE210	2002	B	Loose	Cadmium Plated	8	16
02S	SE210	2002S	B	Loose	Stainless Steel	8	16
03	SE210	2003	C	Loose	Cadmium Plated	8	16
03S	SE210	2003S	C	Loose	Stainless Steel	8	16
04	SE210	2004	A	Loose	Cadmium Plated	8	20
04S	SE210	2004S	A	Loose	Stainless Steel	8	20
06	SE210	1001	A	Fixed	Cadmium Plated	8	16
06S	SE210	1001S	A	Fixed	Stainless Steel	8	16
07	SE210	1002	B	Fixed	Cadmium Plated	8	16
07S	SE210	1002S	B	Fixed	Stainless Steel	8	16
08	SE210	1003	C	Fixed	Cadmium Plated	8	16
08S	SE210	1003S	C	Fixed	Stainless Steel	8	16
09	SE210	1004	A	Fixed	Cadmium Plated	8	20
09S	SE210	1004S	A	Fixed	Stainless Steel	8	20
11	SME210	2001	A	Loose	Cadmium Plated	8	16
11S	SME210	2001S	A	Loose	Stainless Steel	8	16
12	SME210	2002	B	Loose	Cadmium Plated	8	16
12S	SME210	2002S	B	Loose	Stainless Steel	8	16
13	SME210	2003	C	Loose	Cadmium Plated	8	16
13S	SME210	2003S	C	Loose	Stainless Steel	8	16
14	SME210	2004	A	Loose	Cadmium Plated	8	20
14S	SME210	2004S	A	Loose	Stainless Steel	8	20
15	SMEL210	2001	D	Loose	Cadmium Plated	8/2	16/22
15S	SMEL210	2001S	D	Loose	Stainless Steel	8/2	16/22
16	SME210	1001	A	Fixed	Cadmium Plated	8	16
16S	SME210	1001S	A	Fixed	Stainless Steel	8	16
17	SME210	1002	B	Fixed	Cadmium Plated	8	16
17S	SME210	1002S	B	Fixed	Stainless Steel	8	16
18	SME210	1003	C	Fixed	Cadmium Plated	8	16
18S	SME210	1003S	C	Fixed	Stainless Steel	8	16
19	SME210	1004	A	Fixed	Cadmium Plated	8	20
19S	SME210	1004S	A	Fixed	Stainless Steel	8	20
20	SMEL210	1001	D	Fixed	Cadmium Plated	8/2	16/22
20S	SMEL210	1001S	D	Fixed	Stainless Steel	8/2	16/22

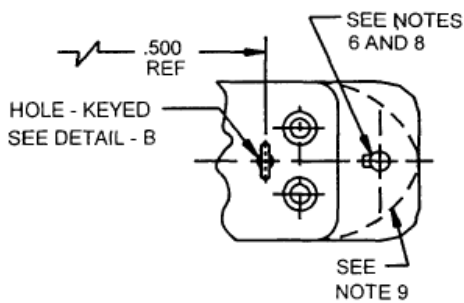
Terminal Layout



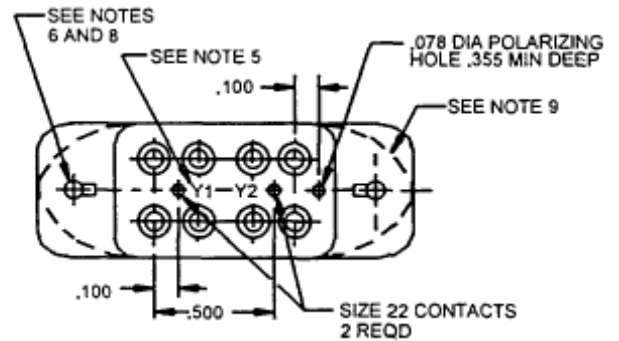
Body Style A



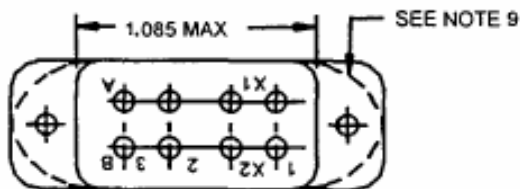
Body Style B



Body Style C

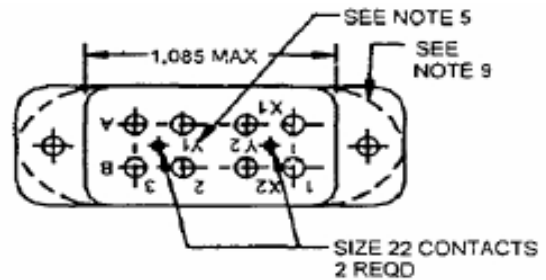


Body Style D



BOTTOM VIEW

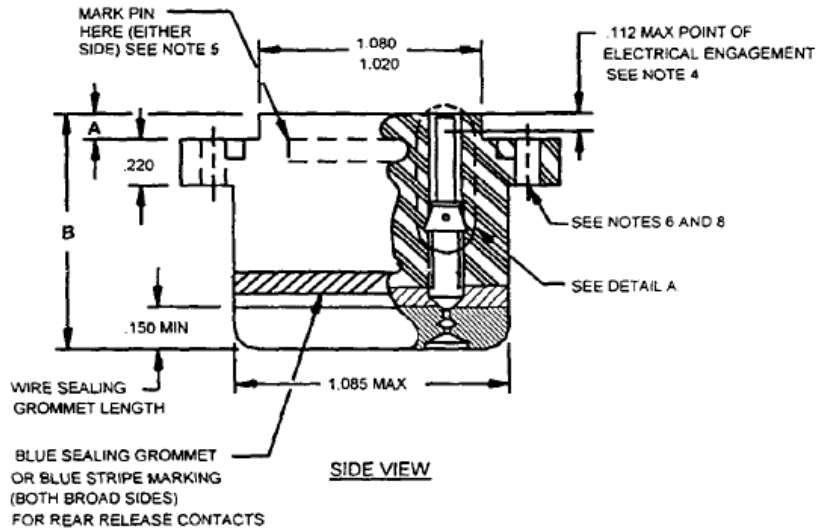
-01, -02, -03, -04, -06
 -07, -08, -09, -11, -12,
 -13, -14, -16, -17, -18,
 and -19



BOTTOM VIEW

-15 and -20

Body Layout



Dash number	A (mm)	B max (mm)
-01 thru -10	.140 - .135 (3.56 - 3.43)	1.130 (28.70)
-11 thru -20	.093 (2.36)	.89 (2.26)