

SYM	1ST. ISS.	DESCRIPTION	DATE	APPROVAL
A	1-.465 WAS .447 3-.030 WAS .025	2-.300 WAS .275 4- 2.500 WAS 2.00	4-10-67	RP
B	1-.325 WAS .300 2- 2# 1/4" WAS 1# 3/4"		5-12-67	KH
C	ADDED WASHER UNDER RIVET ROLL OVER		6-1-67	KH

- 1. PRETRAVEL: .203 MAX
- 2. OVERTRAVEL: .250 MIN
- 3. DIFFERENTIAL: .100 MAX.
- 4. OPERATING FORCE: 3 LBS ± 15 LBS.
- 5. RELEASE FORCE: 2 LB ± 1 LB
- 6. OVERTRAVEL FORCE: 4.5 LBS MAX.
- 7. WEIGHT: 4 OZ. MAX.

±.002
.147 DIA HOLE (2 PLACES) FOR #6-32
MTG SCREW AND 100° X .280 DIA
COUNTERSINK.

±.005
234

±.010
546

MS-24456-1 (2 REQ'D.)
(KX4-11 HERMETIC SWITCH)

	28 V.D.C.	115 VAC 400 CYCLES
RES.	10	10
IND	5	5
LAMP	3	3

UNLESS OTHERWISE SPECIFIED			DATE
DIMENSIONS ARE IN INCHES			R. Puccini 1-9-67
TOLERANCES ON FRACTIONS			
DECIMALS	ANGLES		
±.031			R. Puccini 1-9-67

SWITCH, PUSH D P D T
DOOR INTERLOCK
ENVELOPE DRAWING

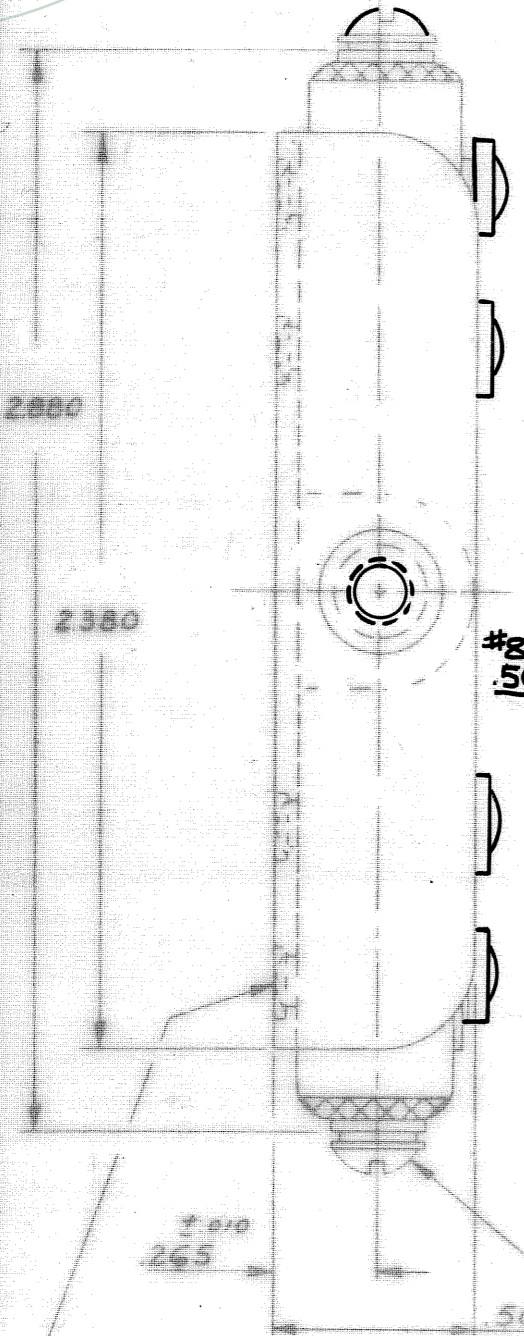
TEXAS INSTRUMENTS
INCORPORATED
METALS & CONTROLS DIVISION
ATLLEBORO, MASSACHUSETTS, U.S.A.

SPENCER KILBON PRODUCTS

21628

#302 STAINLESS STEEL
BRACKET .062" THICK

Property of
Senata Technologies

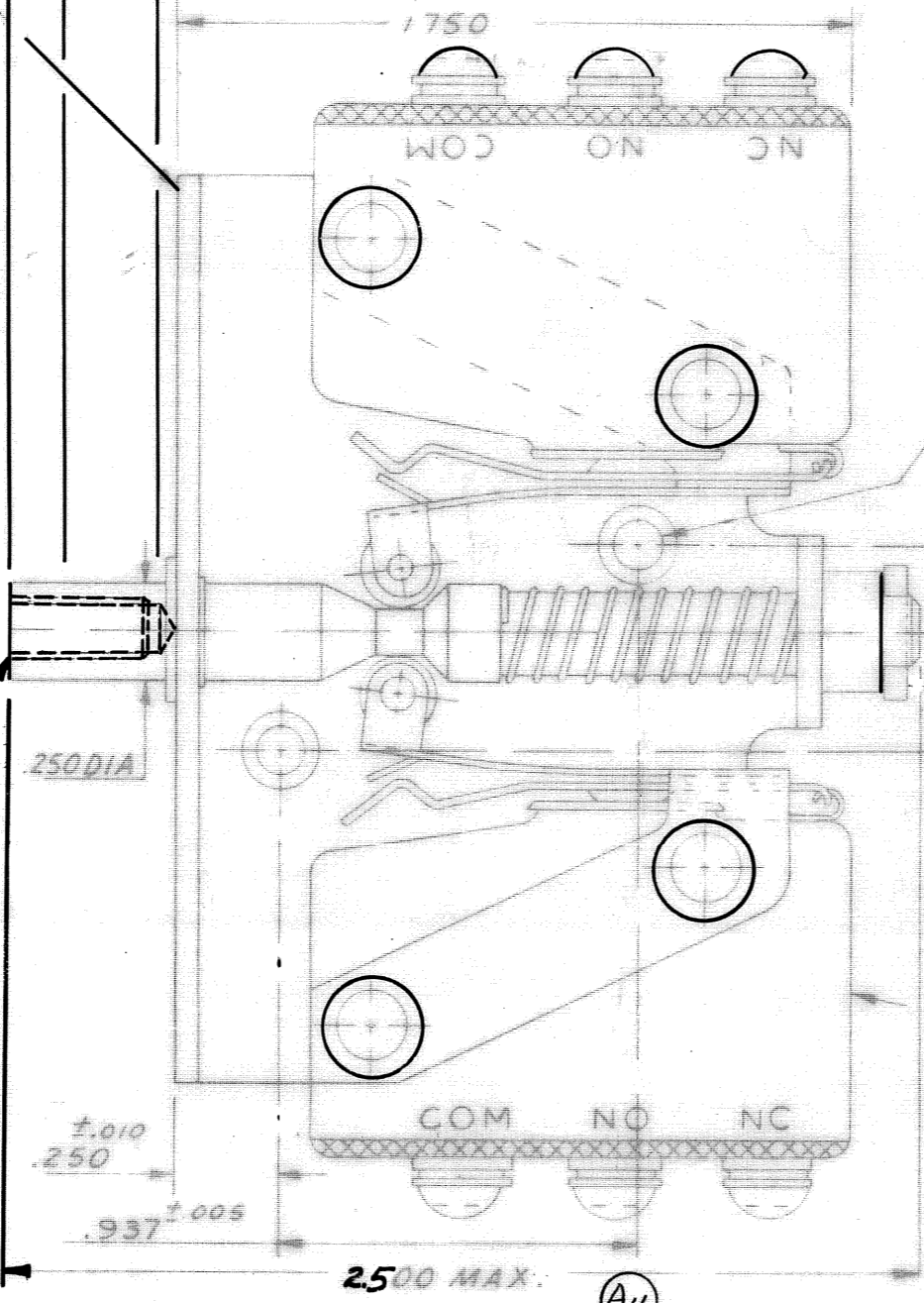


#8-32UNC-2B
500 MIN. DP.

RIVETS FLUSH OR
UNDERFLUSH (4 PLACES)

AN508-4-5 SCREW
AN 935-4 LOCKWASHER
AN 960-4 WASHER

- A₁ 465 MAX. FREE POSITION
- A₂ .325 OPERATING POSITION
- B₁
- A₃ .030 MAX. DEPRESSED POSITION



250 DIA

±.010
250

±.005
.937

A₄

DR
MAT WAS #1010 CES. CMO PLATED
BRACKET, CR.72680 6-9-77 J
D

Q13-1 P18-1 P9-1 P4-1 P3-2